

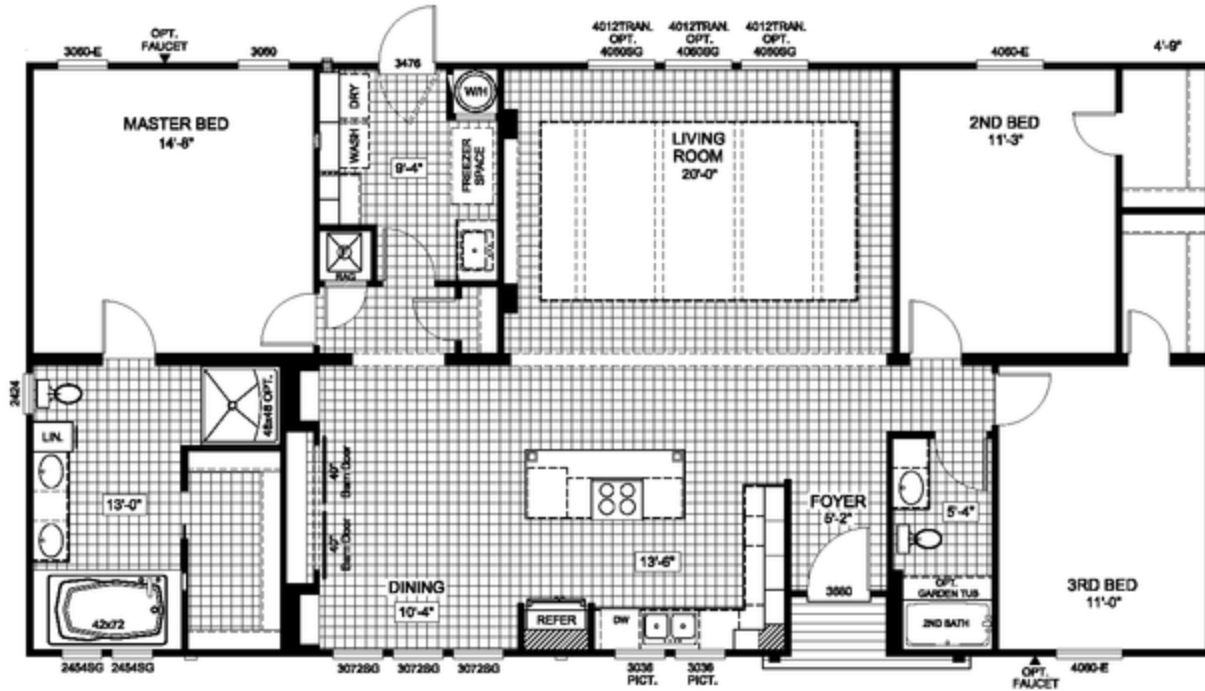


THE FULLERTON

Home Plan 74DYN32603CH

3 Beds · 2 Baths · 1785 sq. ft. · 60' width · 32' depth

<https://www.claytonhomes.com/homes/74DYN32603CH>



Features

Kitchen Island
Open Floor Plan
Tray Ceilings

Breakfast Bar
Double Sinks in Bath

Split Bedrooms
Separate Tub and Shower

Utility Room
Foyer

The home series and floor plans shown all have starting prices within the price range indicated. Your local Home Center can quote you specific prices and terms of purchase for specific homes. Clayton invests in continuous product and process improvement. All home series, floor plans, specifications, dimensions, features, materials, availability, and starting prices shown are artist's renderings or estimates and are subject to change without notice or obligation. Dimensions are nominal and length and width measurements are from exterior wall to exterior wall. Starting prices include the home only, plus typical delivery and installation. Starting prices do not include other costs such as taxes, title fees, insurance premiums, filing or recording fees, land or improvements to the land, optional home features, optional delivery or installation services, wheels and axles, community or homeowner association fees, or any other items not shown on your Retailer Closing Agreement and related documents (your RCA). Your RCA will show the details of your purchase. 2020 Clayton Homes. All rights reserved.

