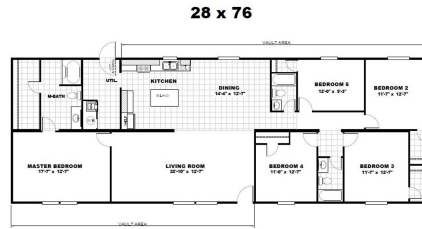




**TRIUMPH**  
**SA4082419ALAB**  
**5 beds • 3 baths**  
**2,001 sq. ft.**



**28 x 76**



**(205) 663-3730**

Monday - Friday: 9am - 6pm

Saturday: 9am - 5pm Sunday: Closed

**CLAYTON HOMES-PELHAM**

**3260 PELHAM PARKWAY**

**PELHAM, AL 35124**

Our home building facilities invest in continuous product and process improvements. Plans, dimensions, features, materials, specifications, and availability are subject to change without notice or obligation. Renderings and floor plans are representative likenesses of our homes and many differ from actual homes. We invite you to tour a Home Center near you and inspect the highest value in quality housing available or call (865) 688-6110 to speak with a Home Consultant. ©2022, CMH. All rights reserved.